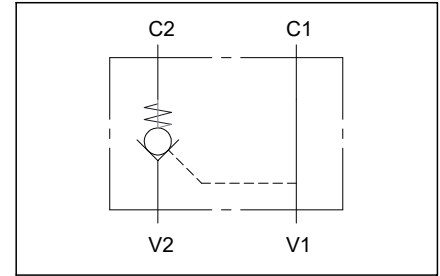
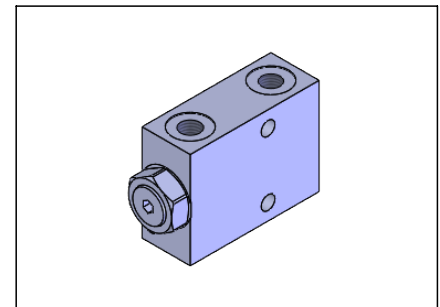
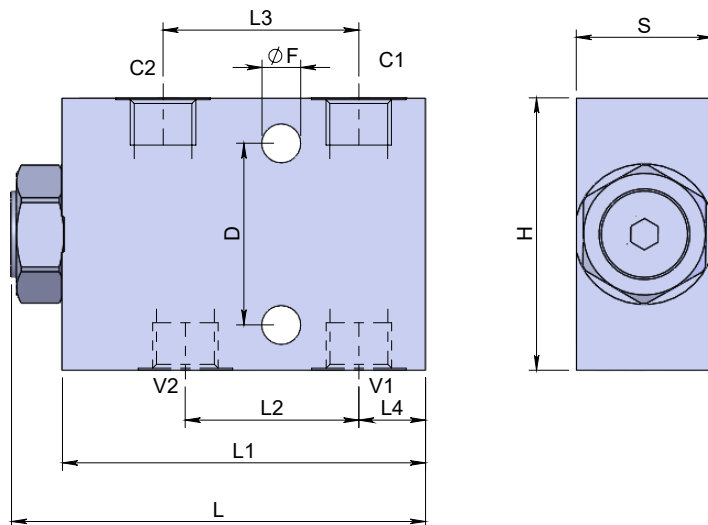
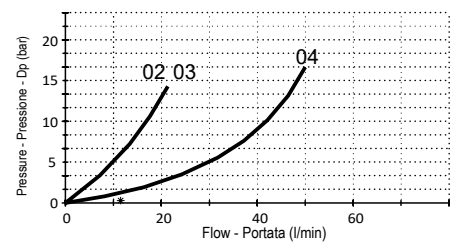


**In line single pilot operated check valve**  
**Valvola di blocco pilotata semplice effetto in linea**

**Specifications / Specifiche**

Fluid viscosity:	Viscosità Fluido :	ISO 3448
Filtration:	Classe di contaminazione:	ISO 4406
Fluid temperature:	Temperatura fluido:	-20°C +90°C
Ambient temperature:	Temperatura ambiente:	-20°C +50°C
Max. operating pressure:	Pressione di lavoro max :	350 Bar
External surfaces:	Superfici esterne:	Zinc plated/Zincate
Standard seals:	Guarnizioni standard:	NBR 70 Shore A

**Hydraulic symbol / Simbolo idraulico**

**Dimensions / Dimensioni (mm)**

**Performance / Prestazioni**

 Oil viscosity - Viscosità olio 24 mm<sup>2</sup>/s (3,5 °E) - Temperature 50°C

**How to order / Come ordinare**
**14-M-01-L00-3-\*-\*\*-\***

 3=Zinc plated steel Std.  
 For aluminium version contact  
 our customer service.

Material

Materiale

 M=With OR Std.  
 N= Without OR

OR on pilot piston

OR su pistone pilota

 Cracking pressure X = 1 bar  
 Pressione di apertura Y = 3 bar Std  
 Z = 8 bar

 P-T Port size 02 = 1/4 BSPP  
 Dimensione attacchi P-T 03 = 3/8 BSPP  
 04 = 1/2 BSPP

Standard code Codice standard	Thread/Filetto		L	L1	L2	L3	L4	H	S	D	ØF	Weight/Peso (kg)	Max. Flow Q max (l/min)	Pilot ratio Rapp. pil.
	V1-V2	C1-C2												
14M01L003M02Y	1/4	1/4	92	80	33.5	50	15	60	30	40	8.5	1.0	20	7 : 1
14M01L003M03Y	3/8	3/8	92	80	33.5	50	15	60	30	40	8.5	1.0	30	7 : 1
14M01L003M04Y	1/2	1/2	119	105	49	70	17.5	80	35	40	8.5	2.1	55	3.8 : 1

\*On request versions: Please, contact our customer service.

\*Versioni su richiesta: Per cortesia contattare il ns. servizio clienti.