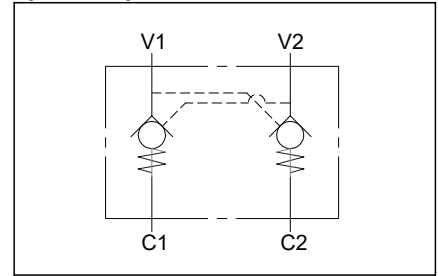
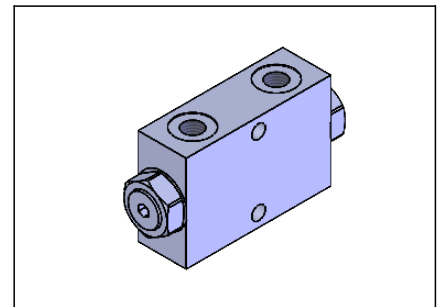
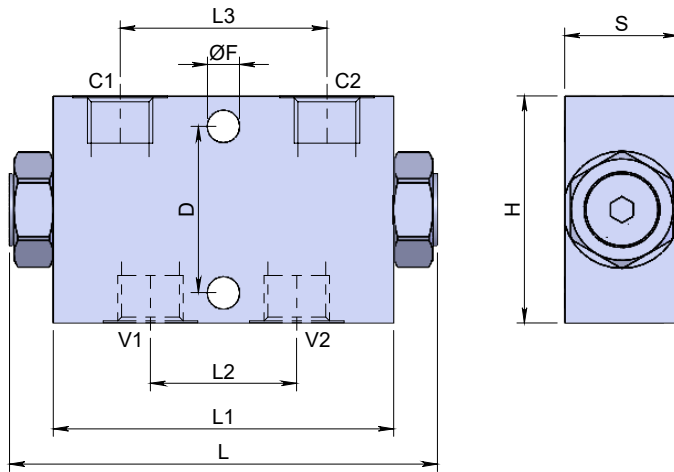
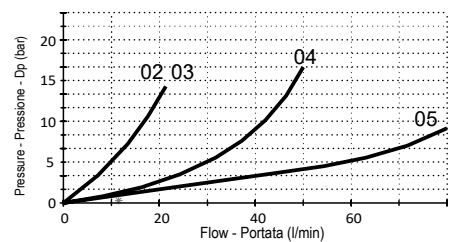


In line dual pilot operated check valve
Valvola di blocco pilotata doppio effetto in linea

Specifications / Specifiche

| | | |
|--------------------------|---------------------------|---------------------|
| Fluid viscosity: | Viscosità Fluido : | ISO 3448 |
| Filtration: | Classe di contaminazione: | ISO 4406 |
| Fluid temperature: | Temperatura fluido: | -20°C +90°C |
| Ambient temperature: | Temperatura ambiente: | -20°C +50°C |
| Max. operating pressure: | Pressione di lavoro max : | 350 Bar |
| External surfaces: | Superfici esterne: | Zinc plated/Zincate |
| Standard seals: | Guarnizioni standard: | NBR 70 Shore A |

Hydraulic symbol / Simbolo idraulico

Dimensions / Dimensioni (mm)

Performance / Prestazioni

 Oil viscosity - Viscosità olio 24 mm²/s (3,5 °E) - Temperature 50°C

How to order / Come ordinare
14-M-02-L00-3-*--***

 3=Zinc plated steel Std.
 For aluminium version contact
 our customer service.

 Material
 Materiale

 Cracking pressure
 Pressione di apertura

 Y = 3 bar Std
 Z = 8 bar
 X = Only 1 bar for 3/4 size

 M=With OR Std.
 N= Without OR

 OR on pilot piston
 OR su pistone pilota

 P-T Port size
 Dimensione attacchi P-T

 02 = 1/4 BSPP
 03 = 3/8 BSPP
 04 = 1/2 BSPP
 05 = 3/4 BSPP

| Standard code Codice standard | Thread/Filetto | | L | L1 | L2 | L3 | H | S | D | ØF | Weight/Peso (kg) | Max. Flow Q max (l/min) | Pilot ratio Rapp. pil. |
|----------------------------------|----------------|-------|-----|-----|----|-----|----|----|----|------|---------------------|----------------------------|---------------------------|
| | V1-V2 | C1-C2 | | | | | | | | | | | |
| 14M02L003M02Y | 1/4 | 1/4 | 113 | 90 | 27 | 52 | 60 | 30 | 44 | 8.5 | 1.0 | 20 | 6.25 : 1 |
| 14M02L003M03Y | 3/8 | 3/8 | 113 | 90 | 30 | 52 | 60 | 30 | 44 | 8.5 | 1.2 | 30 | 6.25 : 1 |
| 14M02L003M04Y | 1/2 | 1/2 | 143 | 115 | 39 | 80 | 80 | 35 | 40 | 8.5 | 2.4 | 55 | 4 : 1 |
| 14M02L003M05X | 3/4 | 3/4 | 177 | 158 | 50 | 105 | 80 | 50 | 58 | 10.5 | 4.6 | 100 | 3.8 : 1 |

*On request versions: Please, contact our customer service.

*Versioni su richiesta: Per cortesia contattare il ns. servizio clienti.