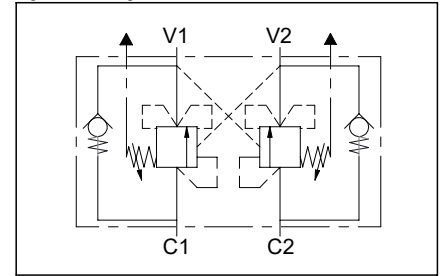
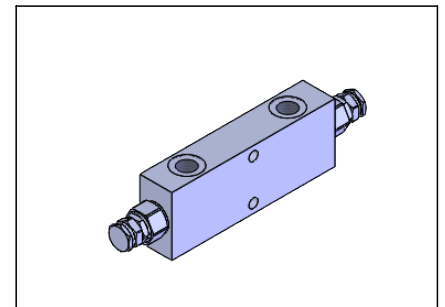
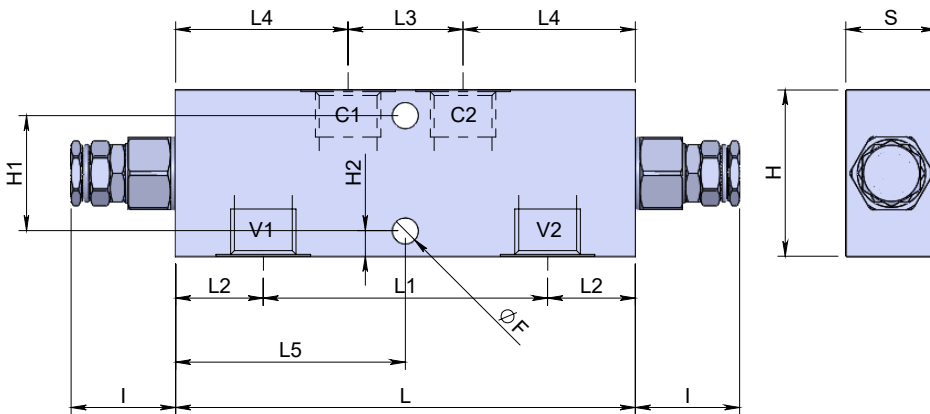
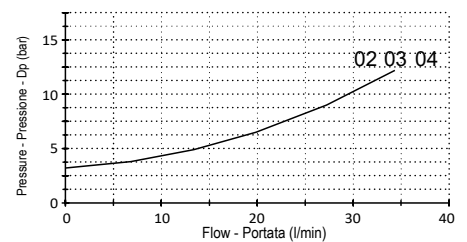


**Double effect overcenter valve for closed center
Valvola overcenter doppio effetto per centro chiuso**

Specifications / Specifiche

Fluid viscosity:	Viscosità Fluido :	ISO 3448
Filtration:	Classe di contaminazione:	ISO 4406
Fluid temperature:	Temperatura fluido:	-20°C +90°C
Ambient temperature:	Temperatura ambiente:	-20°C +50°C
Max. operating pressure:	Pressione di lavoro max :	350 Bar - Steel
Max. operating pressure:	Pressione di lavoro max :	275 Bar - Aluminium
Standard seals:	Guarnizioni standard:	NBR 70 Shore A

Hydraulic symbol / Simbolo idraulico

Dimensions / Dimensioni (mm)

Performance / Prestazioni V to C

 Oil viscosity - Viscosità olio 24 mm²/s (3,5 °E) - Temperature 50°C

How to order / Come ordinare
16N-A-08-L03-*-R-*-*

 A = Std. see tab Pilot ratio
 B = 8:1 Rapporto di pilotaggio
 C = 11:1

 1 = Raw aluminium Manifold material
 3 = Zinc plated steel Materiale collettore

 Setting range Std setting P increase bar/turn
 X = 50-210 - 200 - 70 (bar)
 Y = 100-350 - 300 - 120 (bar)

 V-C Port size 02 = 1/4 BSPP
 Dimensione attacchi V-C 03 = 3/8 BSPP
 04 = 1/2 BSPP

Standard code Codice standard	Threads V-C	L	L1	L2	L3	L4	L5	ØF	H	H1	H2	I	S	Weight/Peso Alloy (kg)	Weight/Peso Steel (kg)	Max. Flow Q max (l/min)	Pilot ratio Rapp. pil.
		16NA08L033R02Y	1/4	152	94	29	38	57	76	6.5	45	28	8.5	34.6	30	0.8	1.7
16NA08L033R03Y	3/8	152	94	29	38	57	76	8.5	55	38	8.5	34.6	30	0.9	1.9	40	4.1 : 1
16NA08L033R04Y	1/2	152	94	29	38	57	76	8.5	55	38	8.5	34.6	30	0.9	1.9	40	4.1 : 1

*On request versions: Please, contact our customer service.

*Versioni su richiesta: Per cortesia contattare il ns. servizio clienti.