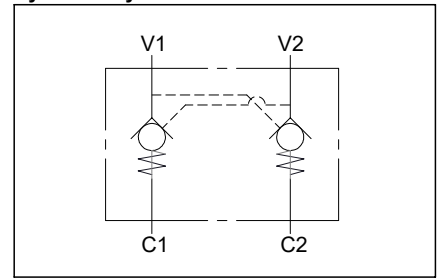
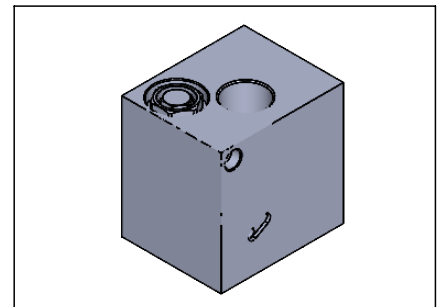
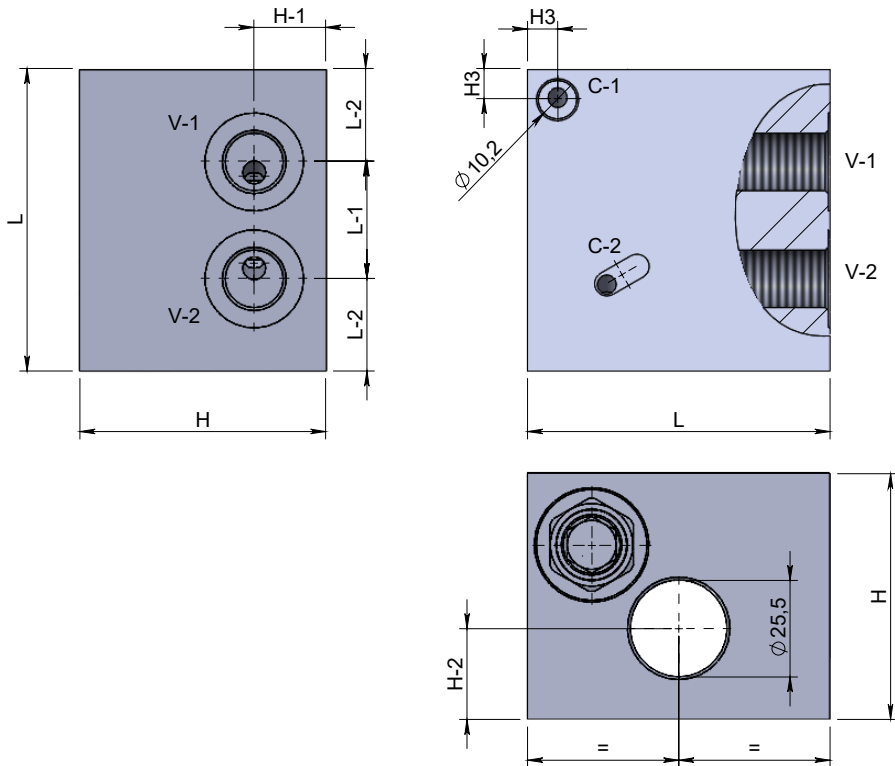
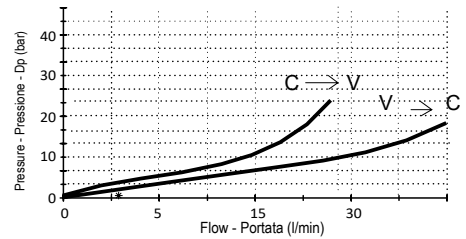


Dual pilot operated check valve to weld
Valvola di blocco pilotata doppio effetto a saldare

Specifications / Specifiche

Fluid viscosity:	Viscosità Fluido :	ISO 3448
Filtration:	Classe di contaminazione:	ISO 4406
Fluid temperature:	Temperatura fluido:	-20°C +90°C
Ambient temperature:	Temperatura ambiente:	-20°C +50°C
Max. operating pressure:	Pressione di lavoro max :	350 Bar
Materials	Body	FE-360 to weld
Standard seals:	Guarnizioni standard:	NBR 70 Shore A

Hydraulic symbol / Simbolo idraulico

Dimensions / Dimensioni (mm)

Performance / Prestazioni

 Oil viscosity - Viscosità olio 24 mm²/s (3,5 °E) - Temperature 50°C

How to order / Come ordinare
14-AS-2-L-3-M-03-Y**

 L = 80
 L = 90

The check cartridge and the pilot piston have to be fitted after installation of the valve therefore they are supplied separately

Standard code Codice standard	Thread/Filetto		L	L1	L2	H	H1	H2	H3	Weight/Peso (kg)	Max. Flow Q max (l/min)	Cracking. P. P. Apertura	Pilot ratio Rapp. pil.
	V-1	V-2											
14AS2L803M03Y	3/8-G	3/8-G	80	31	24.5	65	19	24	8	2.80	25	3	5.5 : 1
14AS2L903M03Y	3/8-G	3/8-G	90	28	31	65	19	24	10	3.50	25	3	5.5 : 1

*On request versions: Please, contact our customer service.

*Versioni su richiesta: Per cortesia contattare il ns. servizio clienti.