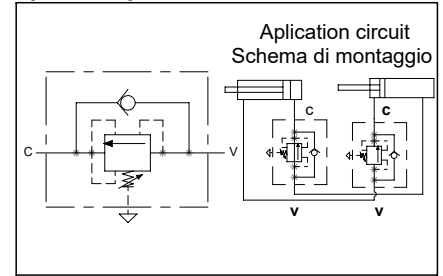
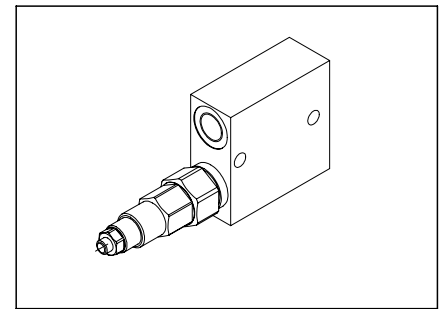
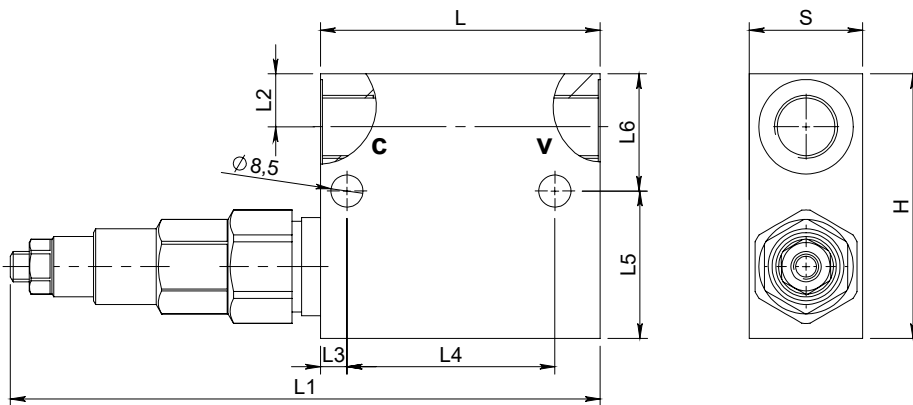
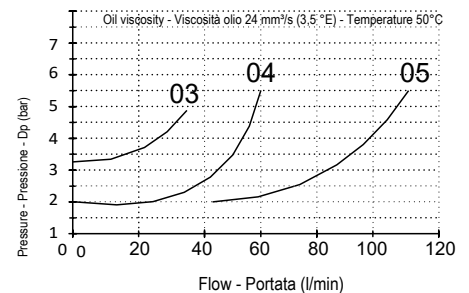


Sequence valve with primary pressure compensation
Valvola di sequenza ad annullamento pressione primaria

Specifications / Specifiche

Fluid viscosity:	Viscosità Fluido :	ISO 3448
Filtration:	Classe di contaminazione:	ISO 4406
Fluid temperature:	Temperatura fluido:	-20°C +90°C
Ambient temperature:	Temperatura ambiente:	-20°C +50°C
Max. operating pressure:	Pressione di lavoro max :	350 Bar
Standard seals:	Guarnizioni standard:	NBR 70 Shore A
Manifold material:	Materiale collettore:	Zinc plated steel

Hydraulic symbol / Simbolo idraulico

Dimensions / Dimensioni (mm)

Performance / Prestazioni
Pressure drop curve / Perdite di carico

How to order / Come ordinare
11-A-PP-F00-3-R--***

N= Tamper resistant cap
 O= Handknob and locknut
 R= Screw with steel cap (Std)

Adjustment
 Regolazione

Setting range
 Campo taratura

03 = 3/8 BSPP
 04 = 1/2 BSPP
 05 = 3/4 BSPP

Ports size
 Dimensione attacchi

3/8 - 1/2

X = 10-50 bar 30 bar
 Y = 20-100 bar 75 bar
 Z = 10-180 bar (Std) 90 bar
 T = 50-250 bar 130 bar
 W = 80-300 bar 150 bar

Std setting at 5 l/min

3/4

Z = 20-200 bar 160 bar
 W = 50-400 bar (Std) 180 bar

Standard code Codice standard	C-V	L	L1	L2	L3	L4	L5	L6	H	S	Max.pressure (Bar)	Weight/Peso (kg)	Max. Flow Q max (l/min)
11APPF003R03Z	3/8	74	156	14	7	55	39	31	70	30	350	1.25	35
11APPF003R04Z	1/2	80	162	15	7	55	37	33	70	30	350	1.28	70
11APPF003R05W	3/4	100	192	20	10	60	50	50	100	40	400	2.84	110

*On request versions: Please, contact our customer service.

*Versioni su richiesta: Per cortesia contattare il ns. servizio clienti.