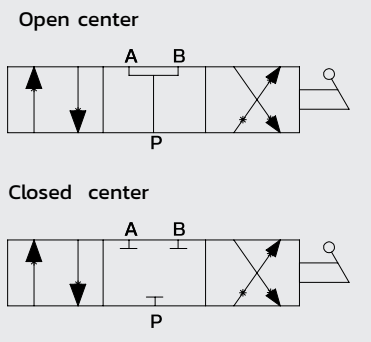
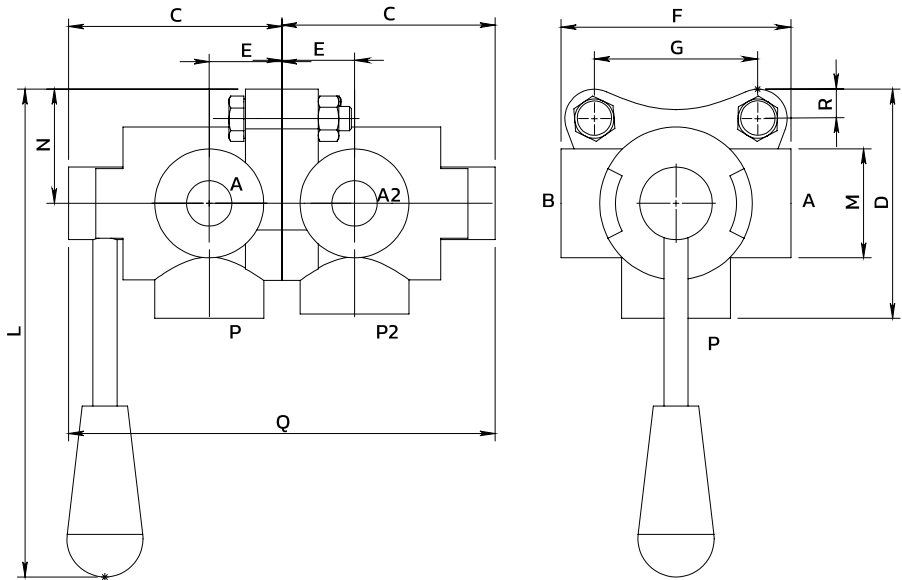
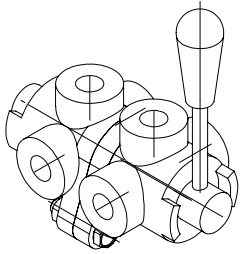
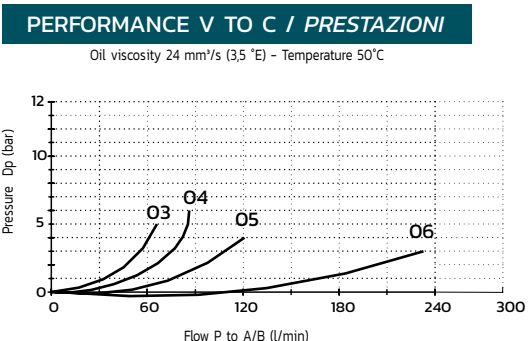


## 6-Way diverter valve cast iron Deviatore di flusso 6 vie ghisa



SPECIFICATIONS / SPECIFICHE	
Fluid viscosity / Viscosità fluido	ISO 3448
Filtration / Classe di contaminazione	ISO 4406
Fluid temperature / Temperatura fluido	-20°C +90°C
Ambient temperature / Temperatura ambiente	-20°C +50°C
Standard seals / Guarnizioni standard	NBR 70 Shore A
Manifold material / Materiale collettore	Cast iron / Ghisa



**ORDERING CODE / CODICE ORDINAZIONE**

26 6 A Y 000 9 D \*\* N

Center option	
000	Closed center
001	Closed center

Ports size	
03	3/8 BSPP
04	1/2 BSPP
05	3/4 BSPP
06	1" BSPP

Standard code	Thread (A-B-P)	B	C	D	E	F	G	L	M	N	Q	R	Weight (kg)	Max. Flow (l/m)	Max. Pressure (bar)
266AY0009D03N	3/8-G	128	62	78.5	21	73	24	169	35	42	124	11	1.78	60+60	350
266AY0009D04N	1/2-G	128	70	96	24	85	30	180	40	53	140	17	2.90	90+90	250
266AY0009D05N	3/4-G	125	80	100	28	91	32	180	45	54	160	13	3.64	120+120	220
266AY0009D06N	1"-G	140	90	113	31.5	98	32	207	56	64	180	14	5	200+200	220

\* On request versions: Please, contact our customer service / Versioni su richiesta: Per cortesia contattare il ns. servizio clienti.