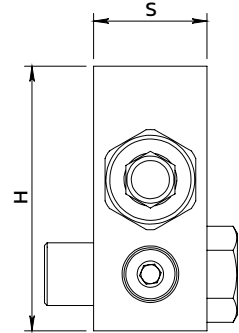
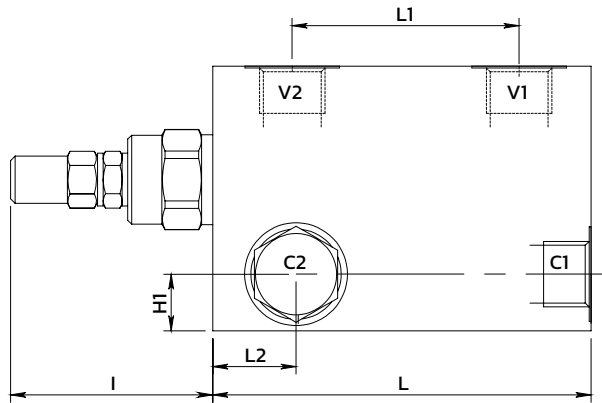
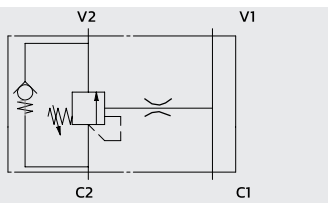
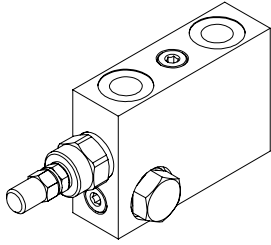


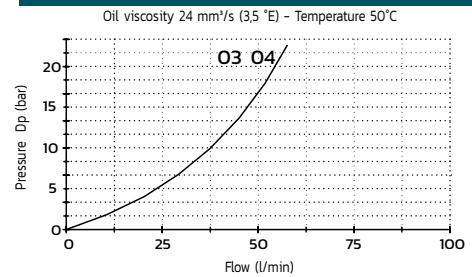
Single effect overcenter valve flangeable with banjo bolt  
*Valvola overcenter semplice effetto flangiabile con bullone raccordo*



### SPECIFICATIONS / SPECIFICHE

Fluid viscosity / Viscosità Fluido	ISO 3448
Filtration / Classe di contaminazione	ISO 4406
Fluid temperature / Temperatura fluido	-20°C +90°C
Ambient temperature / Temperatura ambiente	-20°C +50°C
Max operating pressure / Pressione di lavoro max	350 bar
Standard seals / Guarnizioni standard	NBR 70 Shore A
Manifold material / Materiale collettore	Steel / Acciaio

### PERFORMANCE V2 to C2 / PRESTAZIONI



### ORDERING CODE / CODICE ORDINAZIONE

**15 A BR C01 3 R \*\* \***

Pilot ratio		Adjustment option		Ports size		Setting range (bar)		Std setting (bar)	P increase bar/turn
A	(Std) see tab	R	Steel cap (Std)	03	3/8 BSPP	X	30-210	200	50
B	8:1	N	Tamper proof cap	04	1/2 BSPP	Y	60-350	300	80
C	11:1								

Standard code	Thread V-C	L	L1	L2	I	H	HI	S	Weight (kg)	Max Flow (l/m)	Pilot ratio
15ABRC013R03Y	3/8	100	60	22	54	70	15	30	1.3	40	4.25 : 1
15ABRC013R04Y	1/2	100	60	24	54	70	15	30	1.3	60	4.25 : 1

\* On request versions: Please, contact our customer service / Versioni su richiesta: Per cortesia contattare il ns. servizio clienti.