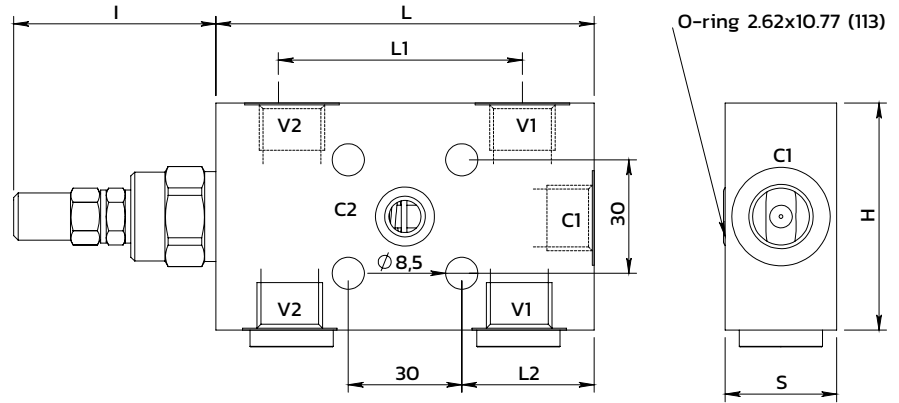
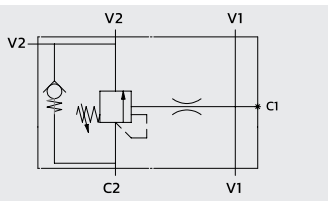
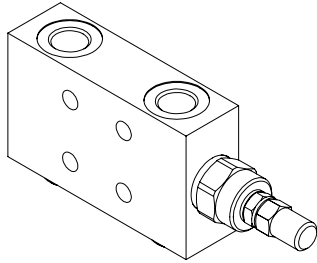
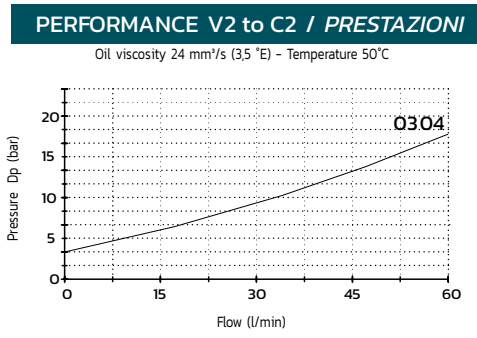


Single effect overcenter flangeable valve with 30x30 fixing holes

Valvola overcenter flangiabile semplice effetto con fori di fissaggio 30x30



SPECIFICATIONS / SPECIFICHE	
Fluid viscosity / Viscosità fluido	ISO 3448
Filtration / Classe di contaminazione	ISO 4406
Fluid temperature / Temperatura fluido	-20°C +90°C
Ambient temperature / Temperatura ambiente	-20°C +50°C
Max operating pressure / Pressione di lavoro max	350 bar
Standard seals / Guarnizioni standard	NBR 70 Shore A
Manifold material / Materiale collettore	Zinc plated steel



ORDERING CODE / CODICE ORDINAZIONE

15M A 12 F14 3 M ** Y 01

Pilot ratio		Adjustment option		Ports size		Setting range (bar)		Std setting (bar)	P increase bar/turn
A	(Std) see tab	M	Steel cap (Std)	03	3/8 BSPP	X	30-210	200	50
B	8:1	N	Tamper proof cap	04	1/2 BSPP	Y	60-350	300	80
C	11:1								

Standard code	Thread V1-V2-C1	C2	L	L1	L2	H	S	I	Weight (kg)	Max Flow (l/m)	Pilot ratio
15MA12F143M03Y01	3/8	8.5	100	60	35	60	29.5	54	1.25	40	4.25 : 1
15MA12F143M04Y01	1/2	8.5	100	65	35	60	29.5	54	1.20	60	4.25 : 1

* On request versions: Please, contact our customer service / Versioni su richiesta: Per cortesia contattare il ns. servizio clienti.