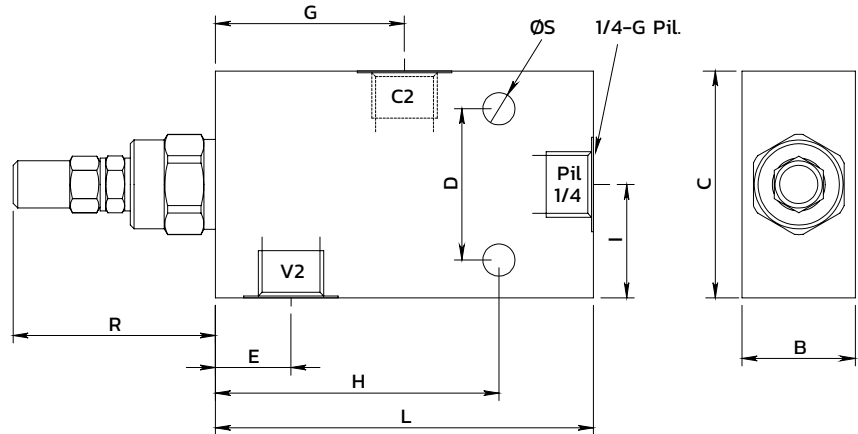
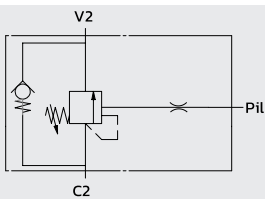
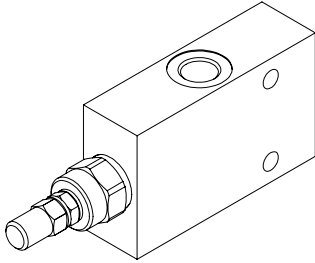


## Single effect overcenter valve, external pilotage

*Valvola overcenter semplice effetto, pilotaggio esterno*

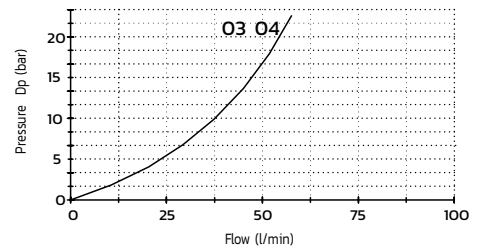


### SPECIFICATIONS / SPECIFICHE

Fluid viscosity / Viscosità fluido	ISO 3448
Filtration / Classe di contaminazione	ISO 4406
Fluid temperature / Temperatura fluido	-20°C +90°C
Ambient temperature / Temperatura ambiente	-20°C +50°C
Max operating pressure / Pressione di lavoro max	350 bar
Standard seals / Guarnizioni standard	NBR 70 Shore A
Manifold material / Materiale collettore	Zinc plated steel

### PERFORMANCE V2 to C2 / PRESTAZIONI

Oil viscosity 24 mm<sup>2</sup>/s (3.5 °E) - Temperature 50°C



### ORDERING CODE / CODICE ORDINAZIONE

**15M A 08 L31 3 M \*\* \***

Pilot ratio		Adjustment option		Ports size		Setting range (bar)		Std setting (bar)	P increase bar/turn
A	(Std) see tab	M	Steel cap (Std)	03	3/8 BSPP	X	30-210	200	50
B	8:1	N	Tamper proof cap	04	1/2 BSPP	Y	60-350	300	80
C	11:1								

Standard code	Thread V-C	B	C	D	E	G	H	L	I	R	ØS	Weight (kg)	Max Flow (l/m)	Pilot ratio
15MA08L313M03Y	3/8	30	60	40	20	50	75	100	30	54	8.5	1.4	40	4.25 : 1
15MA08L313M04Y	1/2	30	60	40	20	50	75	100	30	54	8.5	1.5	60	4.25 : 1

\* On request versions: Please, contact our customer service / Versioni su richiesta: Per cortesia contattare il ns. servizio clienti.