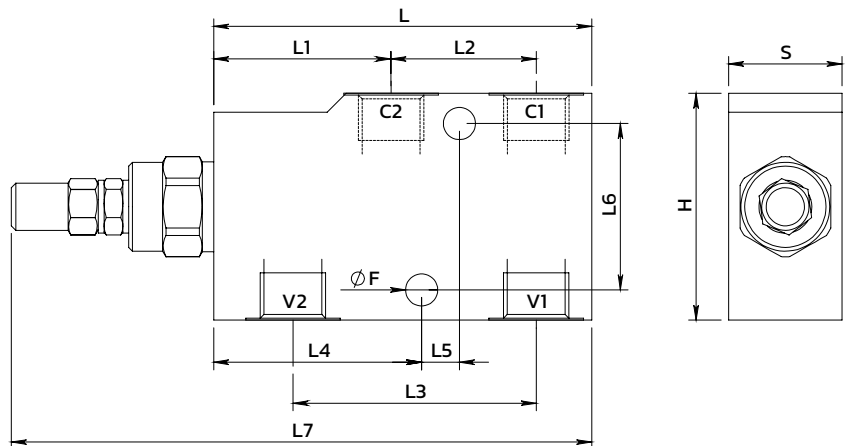
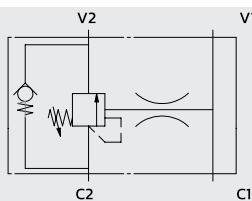
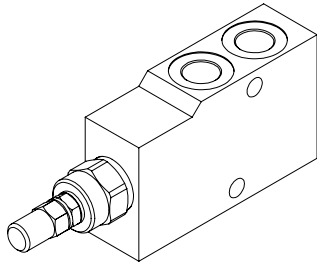


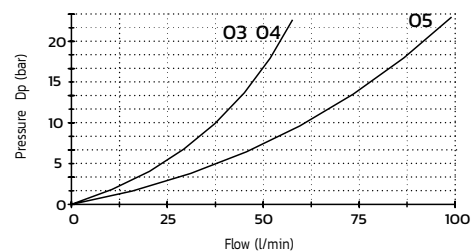
Single effect overcenter valve, choked pilotage  
 Valvola overcenter semplice effetto, pilotaggio strozzato



## SPECIFICATIONS / SPECIFICHE

Fluid viscosity / Viscosità Fluido	ISO 3448
Filtration / Classe di contaminazione	ISO 4406
Fluid temperature / Temperatura fluido	-20°C +90°C
Ambient temperature / Temperatura ambiente	-20°C +50°C
Max operating pressure / Pressione di lavoro max	350 bar
Standard seals / Guarnizioni standard	NBR 70 Shore A
Manifold material / Materiale collettore	Zinc plated steel

## PERFORMANCE V2 to C2 / PRESTAZIONI

Oil viscosity 24 mm<sup>2</sup>/s (3.5 °E) - Temperature 50°C

## ORDERING CODE / CODICE ORDINAZIONE

15 A 01 PSA 3 R \*\* \*

Pilot ratio		Adjustment option		Ports size			Setting range (bar)		Std setting (bar)	P increase bar/turn
A	(Std) see tab	R	Steel cap (Std)	03	3/8 BSPP	X	30-210	200	50	
B	8:1	N	Tamper proof cap	04	1/2 BSPP	Y	60-350	300	80	
C	11:1			05	3/4 BSPP					

Standard code	Thread V-C	L	L1	L2	L3	L4	L5	L6	L7	H	S	ØF	Weight Steel (kg)	Max Flow (l/m)	Pilot ratio
15A01PSA3M03Y	3/8	100	50	30	60	55	10	44	153.5	60	30	8.5	1.25	40	4.25 :1
15A01PSA3M04Y	1/2	100	50	36	65	57.5	10	44	153.5	60	30	8.5	1.20	60	4.25 :1
15A01PSA3M05Y	3/4	127	62.5	46	85	75	10	44	183	80	35	8.5	2.30	90	6.25 :1

\* On request versions: Please, contact our customer service / Versioni su richiesta: Per cortesia contattare il ns. servizio clienti.