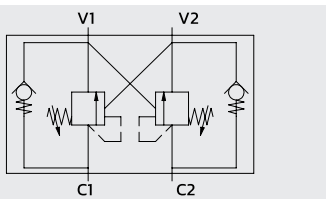
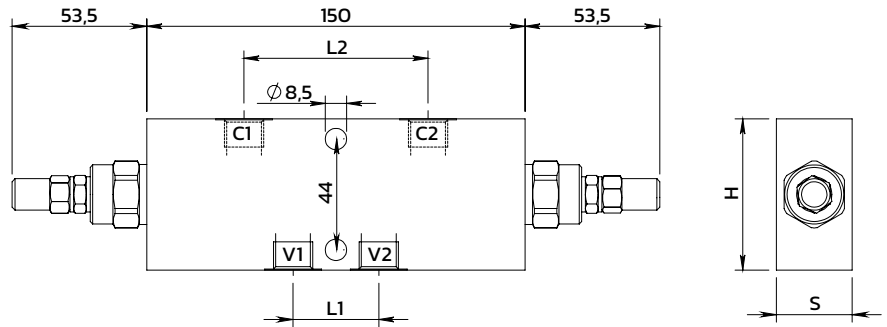
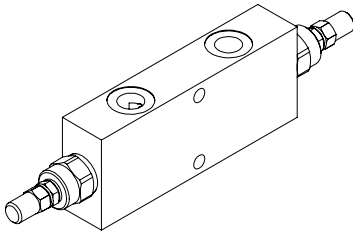


Double effect overcenter valve, AR model

Valvola overcenter doppio effetto, modello AR

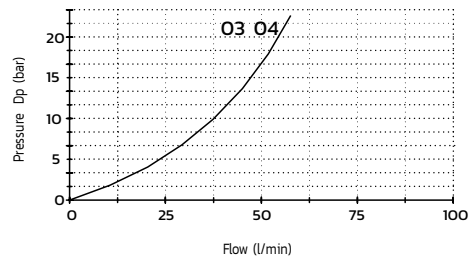


SPECIFICATIONS / SPECIFICHE

Fluid viscosity / Viscosità Fluido	ISO 3448
Filtration / Classe di contaminazione	ISO 4406
Fluid temperature / Temperatura fluido	-20°C +90°C
Ambient temperature / Temperatura ambiente	-20°C +50°C
Max operating pressure / Pressione di lavoro max	350 bar
Standard seals / Guarnizioni standard	NBR 70 Shore A
Manifold material / Materiale collettore	Zinc plated steel

PERFORMANCE V to C / PRESTAZIONI

Oil viscosity 24 mm²/s (3.5 °E) - Temperature 50°C



ORDERING CODE / CODICE ORDINAZIONE

16 A 04 D03 3 M ** *

Pilot ratio		Adjustment option		Ports size		Setting range (bar)		Std setting (bar)	P increase bar/turn
A	(Std) see tab	M	Steel cap (Std)	03	3/8 BSPP	X	30-210	200	50
B	8:1	N	Tamper proof cap	04	1/2 BSPP	Y	60-350	300	80
C	11:1								

Standard code	Thread V-C	L	L1	L2	H	S	Weight (kg)	Max Flow (l/m)	Pilot ratio
16A04D033M03Y	3/8	150	34	73	60	30	2.2	40	4.25 : 1
16A04D033M04Y	1/2	150	36	73	60	30	2.1	60	4.25 : 1

* On request versions: Please, contact our customer service / Versioni su richiesta: Per cortesia contattare il ns. servizio clienti.