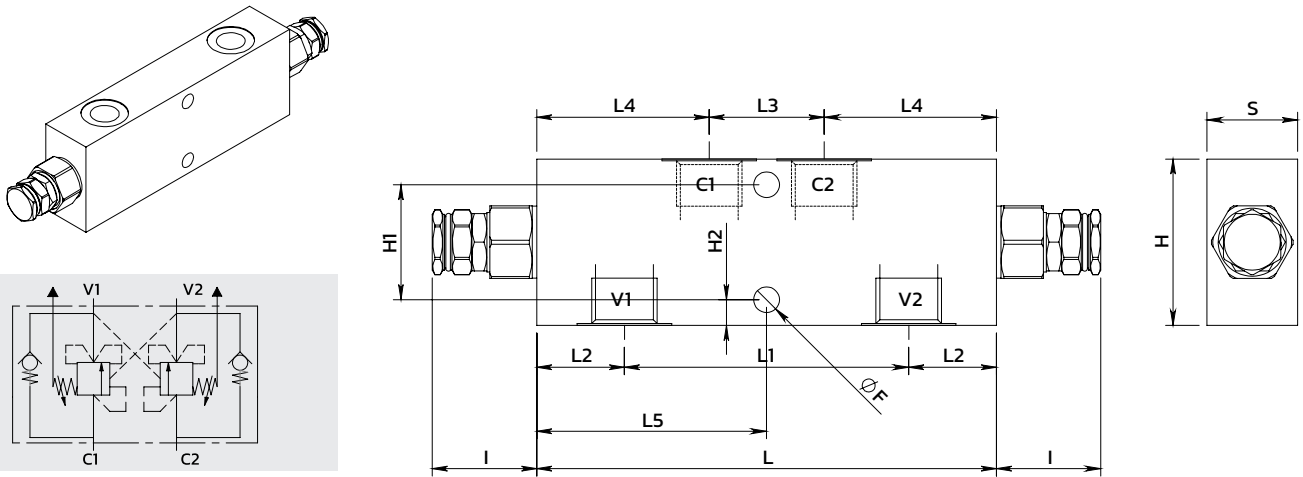
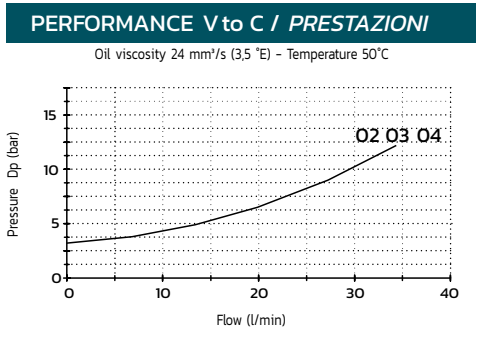


Double effect overcenter valve for closed center
Valvola overcenter doppio effetto per centro chiuso



SPECIFICATIONS / SPECIFICHE	
Fluid viscosity / Viscosità Fluido	ISO 3448
Filtration / Classe di contaminazione	ISO 4406
Fluid temperature / Temperatura fluido	-20°C +90°C
Ambient temperature / Temperatura ambiente	-20°C +50°C
Max operating pressure / Pressione di lavoro max	350 bar-steel
Max operating pressure / Pressione di lavoro max	275 bar-Aluminium
Standard seals / Guarnizioni standard	NBR 70 Shore A



ORDERING CODE / CODICE ORDINAZIONE

16N A 08 L03 * R ** *

Pilot ratio	Manifold material	Adjustment option	Ports size	Setting range (bar)	Std setting (bar)	P increase bar/turn
A (Std) see tab	1 Raw aluminium	R Steel cap (Std)	02 1/4 BSPP	X 50-210	200	50
B 8:1	3 Zinc plated steel	T Tamper proof cap	03 3/8 BSPP	Y 100-350	300	80
C 11:1			04 1/2 BSPP			

Standard code	Thread V-C	L	L1	L2	L3	L4	L5	ØF	H	H1	H2	I	S	Weight Alloy	Weight Steel	Max Flow (l/m)	Pilot ratio
16NA08L033R02Y	1/4	152	94	29	38	57	76	6.5	45	28	8.5	34.6	30	0.8	1.7	40	4.1 : 1
16NA08L033R03Y	3/8	152	94	29	38	57	76	8.5	55	38	8.5	34.6	30	0.9	1.9	40	4.1 : 1
16NA08L033R04Y	1/2	152	94	29	38	57	76	8.5	55	38	8.5	34.6	30	0.9	1.9	40	4.1 : 1

* On request versions: Please, contact our customer service / Versioni su richiesta: Per cortesia contattare il ns. servizio clienti.