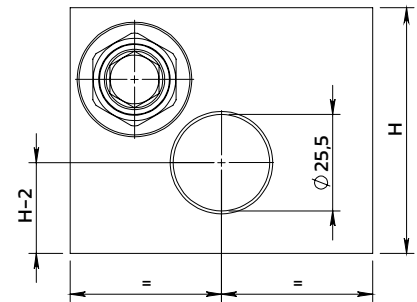
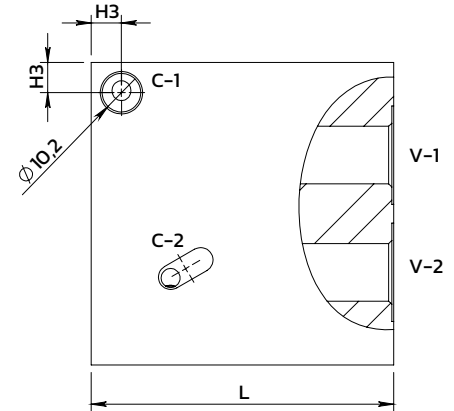
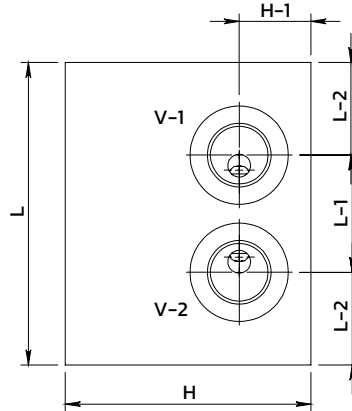
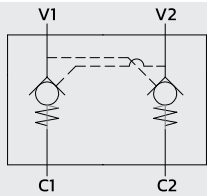
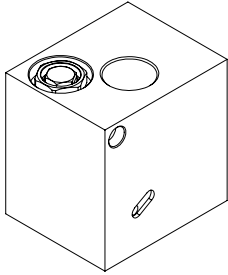


## Dual pilot operated check valve to weld

Valvola di blocco pilotata doppio effetto a saldare

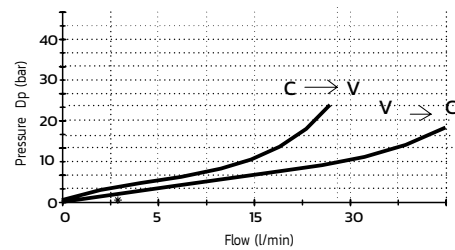


## SPECIFICATIONS / SPECIFICHE

Fluid viscosity / Viscosità fluido	ISO 3448
Filtration / Classe di contaminazione	ISO 4406
Fluid temperature / Temperatura fluido	-20°C +90°C
Ambient temperature / Temperatura ambiente	-20°C +50°C
Max operating pressure / Pressione di lavoro max	350 bar
Standard seals / Guarnizioni standard	NBR 70 Shore A
Material / Materiale	FE-360 to weld

## PERFORMANCE / PRESTAZIONI

Oil viscosity 24 mm<sup>2</sup>/s (3,5 °E) - Temperature 50°C



## ORDERING CODE / CODICE ORDINAZIONE

14 AS 2 L\*\* 3 M 03 Y

Dimension	
L	80
L	90

The check cartridge and the pilot piston have to be fitted after installation of the valve therefore they are supplied separately

Standard code	Thread		L	L1	L2	H	H1	H2	H3	Weight kg	Max Flow (l/m)	Cracking Pressure	Pilot ratio
	V1-V2	C1-C2											
14AS2L803M03Y	3/8-G	10,20	80	31	24,5	65	19	24	8	2,80	25	3	5,5 : 1
14AS2L903M03Y	3/8-G	10,20	90	28	31	65	19	24	10	3,50	25	3	5,5 : 1

\* On request versions: Please, contact our customer service / Versioni su richiesta: Per cortesia contattare il ns. servizio clienti.