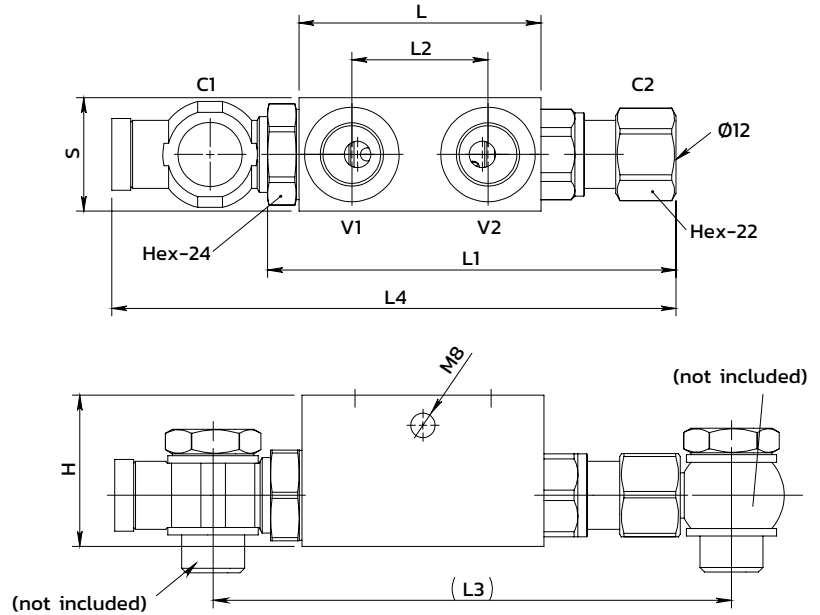
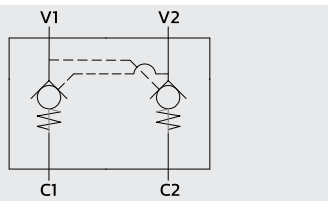
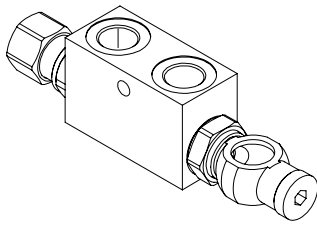
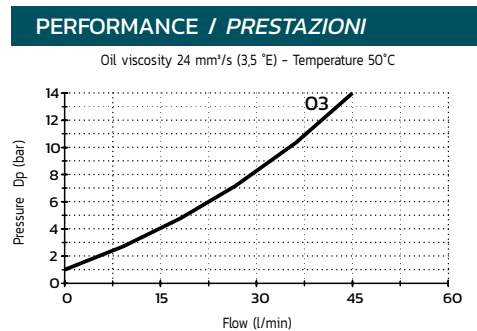


Dual pilot operated check valve with adjustable banjo union

Valvola di blocco pilotata doppio effetto con raccordo ad occhio orientabile



SPECIFICATIONS / SPECIFICHE	
Fluid viscosity / Viscosità fluido	ISO 3448
Filtration / Classe di contaminazione	ISO 4406
Fluid temperature / Temperatura fluido	-20°C +90°C
Ambient temperature / Temperatura ambiente	-20°C +50°C
Max operating pressure / Pressione di lavoro max	350 bar
Standard seals / Guarnizioni standard	NBR 70 Shore A
Manifold material / Materiale collettore	Zinc plated steel



ORDERING CODE / CODICE ORDINAZIONE

14 D 03 A00 3 M 03 *

OR on pilot piston	
M	With OR (Std)
N	Without OR

Cracking pressure	
Y	3 bar (Std)
X	1 bar
Z	8 bar

Standard code	Thread V1-V2 C1-C2	L	L1	L2	L3	L4	H	S	Weight kg Steel	Max Flow (l/m)	Pilot ratio
14D03A003M03Y	3/8 Ø12-3/8	64	106	36	(136)	(151)	40	30	0.9	30	5.5 :1

* On request versions: Please, contact our customer service / Versioni su richiesta: Per cortesia contattare il ns. servizio clienti.