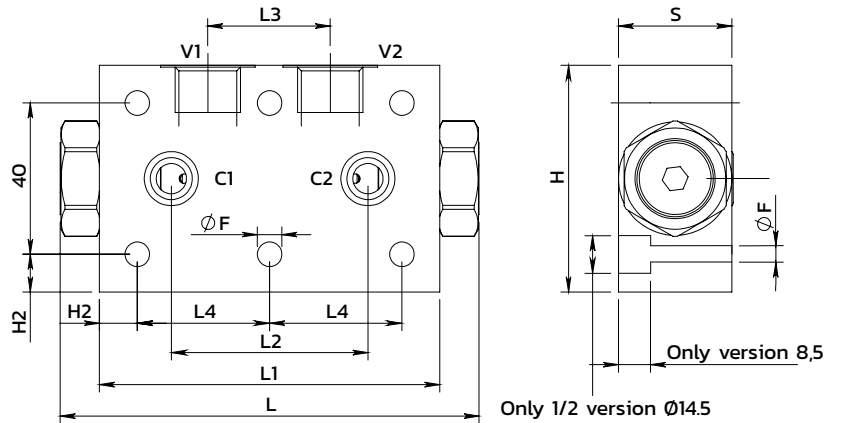
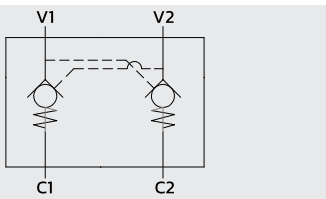
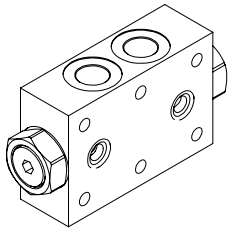
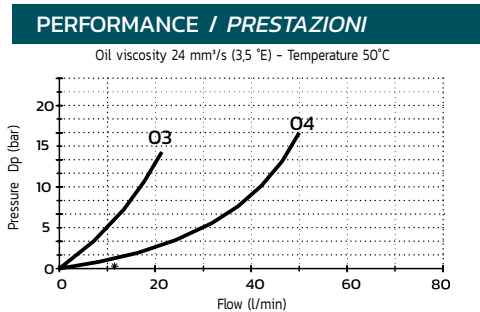


Flangiabile dual pilot operated check valve

Valvola di blocco pilotata doppio effetto flangiabile



SPECIFICATIONS / SPECIFICHE	
Fluid viscosity / Viscosità Fluido	ISO 3448
Filtration / Classe di contaminazione	ISO 4406
Fluid temperature / Temperatura fluido	-20°C +90°C
Ambient temperature / Temperatura ambiente	-20°C +50°C
Max operating pressure / Pressione di lavoro max	350 bar
Standard seals / Guarnizioni standard	NBR 70 Shore A
Manifold material / Materiale collettore	Zinc plated steel



ORDERING CODE / CODICE ORDINAZIONE

14 M 06 B01 3 M ** *

OR on pilot piston		Ports size		Cracking pressure	
M	With OR (Std)	O3	3/8 BSPP	X	1 bar
N	Without OR	O4	1/2 BSPP	Y	3 bar (Std)
				Z	8 bar

Standard code	Thread V1-V2 C1-C2	L	L1	L2	L3	L4	H	S	H2	ØF	Weight kg	Max Flow (l/m)	Pilot ratio
14M06B013M03Y	3/8 Ø6	113	90	52	30	35	60	30	10	6.5	1.2	30	6.25 : 1
14M06B023M03Y	3/8 Ø6	113	90	62	32	35	60	35	10	6.5	1.4	30	6.25 : 1
14M06B013M04Y	1/2 Ø9	138	110	65	34	40	70	34	15	8.5	1.8	60	4:1

* On request versions: Please, contact our customer service / Versioni su richiesta: Per cortesia contattare il ns. servizio clienti.