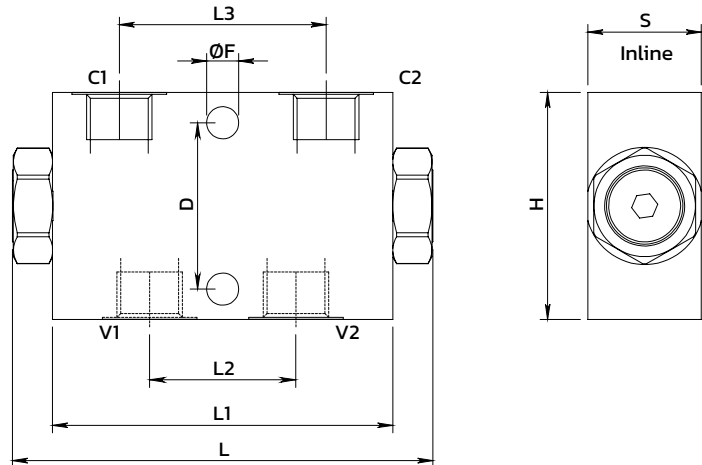
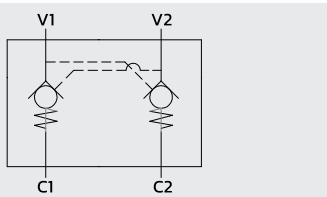
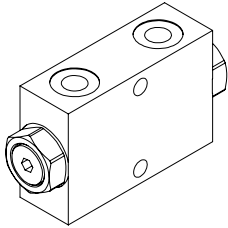


## Inline dual pilot operated check valve

Valvola di blocco pilotata doppio effetto in linea

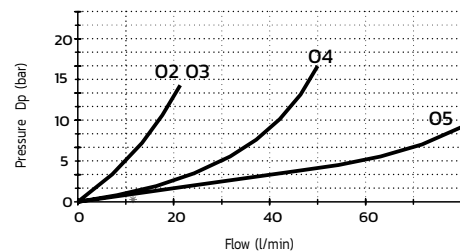


### SPECIFICATIONS / SPECIFICHE

Fluid viscosity / Viscosità fluido	ISO 3448
Filtration / Classe di contaminazione	ISO 4406
Fluid temperature / Temperatura fluido	-20°C +90°C
Ambient temperature / Temperatura ambiente	-20°C +50°C
Max operating pressure / Pressione di lavoro max	350 bar
Standard seals / Guarnizioni standard	NBR 70 Shore A
Manifold material / Materiale collettore	Zinc plated steel

### PERFORMANCE / PRESTAZIONI

Oil viscosity 24 mm<sup>2</sup>/s (3.5 °E) - Temperature 50°C



### ORDERING CODE / CODICE ORDINAZIONE

14 M 02 LOO 3 M \*\* \*

OR on pilot piston		Ports size		Cracking pressure	
M	With OR (Std)	O2	1/4 BSPP	Y	3 bar
N	Without OR	O3	3/8 BSPP	Z	8 bar
		O4	1/2 BSPP	X	Only 1 bar for 3/4 size
		O5	3/4 BSPP		

Standard code	Thread V1-V2 C1-C2	L	L1	L2	L3	H	S	D	ØF	Weight kg	Max Flow (l/m)	Pilot ratio
14M02L003M02Y	1/4	113	90	27	52	60	30	44	8.5	1.0	20	6.25 :1
14M02L003M03Y	3/8	113	90	30	52	60	30	44	8.5	1.2	30	6.25 :1
14M02L003M04Y	1/2	143	115	39	80	80	35	40	8.5	2.4	55	4 :1
14M02L003M05X	3/4	177	158	50	105	80	50	58	10.5	4.6	100	3.8:1

\* On request versions: Please, contact our customer service / Versioni su richiesta: Per cortesia contattare il ns. servizio clienti.