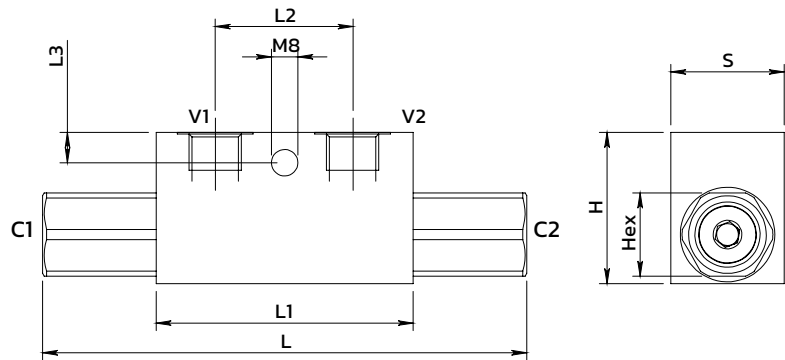
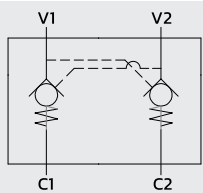
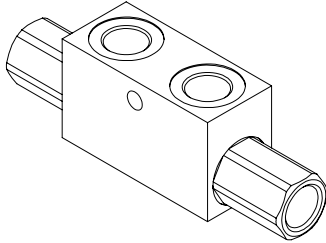


Dual pilot operated check valve

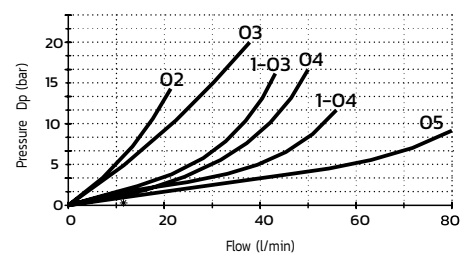
Valvola di blocco pilotata doppio effetto



SPECIFICATIONS / SPECIFICHE

Fluid viscosity / Viscosità fluido	ISO 3448
Filtration / Classe di contaminazione	ISO 4406
Fluid temperature / Temperatura fluido	-20°C +90°C
Ambient temperature / Temperatura ambiente	-20°C +50°C
Max operating pressure / Pressione di lavoro max	350 bar
Standard seals / Guarnizioni standard	NBR 70 Shore A
Manifold material / Materiale collettore	Zinc plated steel

PERFORMANCE / PRESTAZIONI

Oil viscosity 24 mm²/s (35 °E) - Temperature 50°C

ORDERING CODE / CODICE ORDINAZIONE

14	M	O2	A*3	3	M	**	*
----	---	----	-----	---	---	----	---

Flow characteristic	
O	See tab
1	See tab

OR on pilot piston	
M	With OR (Std)
N	Without OR

Ports size	
O2	1/4 BSPP
O3	3/8 BSPP
O4	1/2 BSPP
O5	3/4 BSPP

Cracking pressure	
Y	See tab. (Std)
X	1 bar

Standard code	Thread V1-V2 C1-C2	L	L1	L2	L3	H	S	Hex	Weight kg	Max Flow (l/m)	Cracking P	Pilot ratio
14M02A033M02Y	1/4	113	64	36	8	40	30	22	0.65	20	4	5.5 : 1
14M02A033M03Y	3/8	128	68	38	8	40	30	22	0.75	35	3	5.5 : 1
14M02A133M03Y	3/8	156	90	45	12.5	45	35	27	1.15	45	8	5 : 1
14M02A033M04Y	1/2	142	90	45	12.5	45	35	27	1.05	50	6	5 : 1
14M02A133M04Y	1/2	144	80	40	18	60	35	30	1.30	70	3.5	4 : 1
14M02A033M05Y	3/4	192	100	46	12	60	40	36	1.95	100	3	4 : 1

* On request versions: Please, contact our customer service / Versioni su richiesta: Per cortesia contattare il ns. servizio clienti.