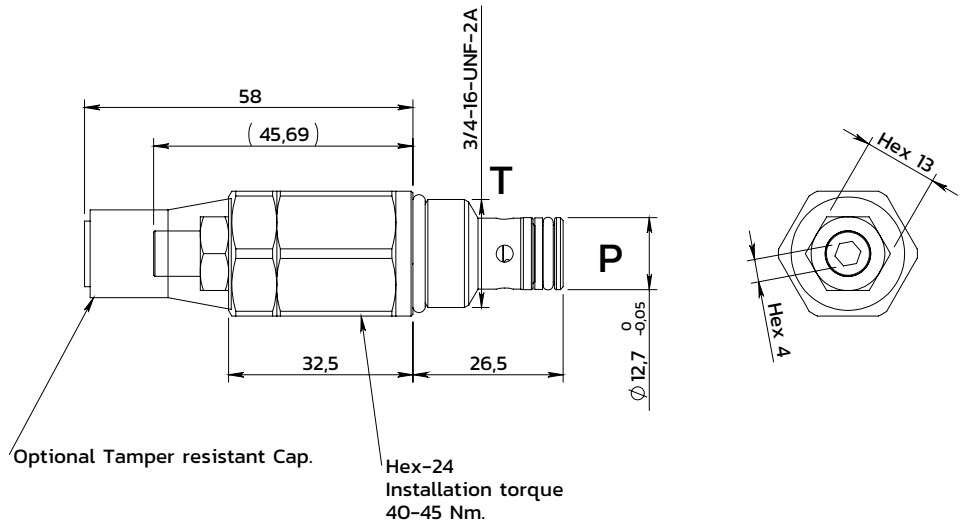
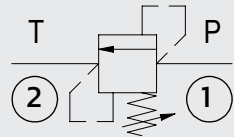
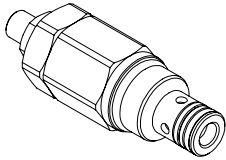


Direct acting relief valve

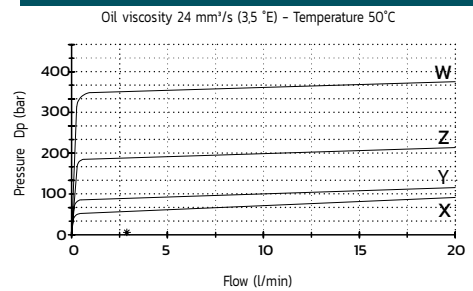
Valvola di massima pressione ad azione diretta



SPECIFICATIONS / SPECIFICHE

Fluid viscosity / <i>Viscosità fluido</i>	ISO 3448
Filtration / <i>Classe di contaminazione</i>	ISO 4406
Fluid temperature / <i>Temperatura fluido</i>	-20°C +90°C
Ambient temperature / <i>Temperatura ambiente</i>	-20°C +50°C
Max operating pressure / <i>Pressione di lavoro max</i>	350 bar
Max flow / <i>Portata massima</i>	20 l/min
External surfaces / <i>Superfici esterne</i>	Zinc plated
Standard seals / <i>Guarnizioni standard</i>	NBR 70 Shore A
Cavity code / <i>Codice cavità</i>	SAE-08-2-Vie

PERFORMANCE / PRESTAZIONI



ORDERING CODE / CODICE ORDINAZIONE

10 A 02 A00 3 M 51 *

Adjustment	
M	Socket screw (Std)
N	Tamper resistant cap
O	Handknob and locknut

	Setting range (bar)	Std setting at 5 l/min (bar)
X	5-50	50
Y	30-100	100
Z	50-210 (Std)	200
W	100-350	300

* On request versions: Please, contact our customer service / *Versioni su richiesta: Per cortesia contattare il ns. servizio clienti.*