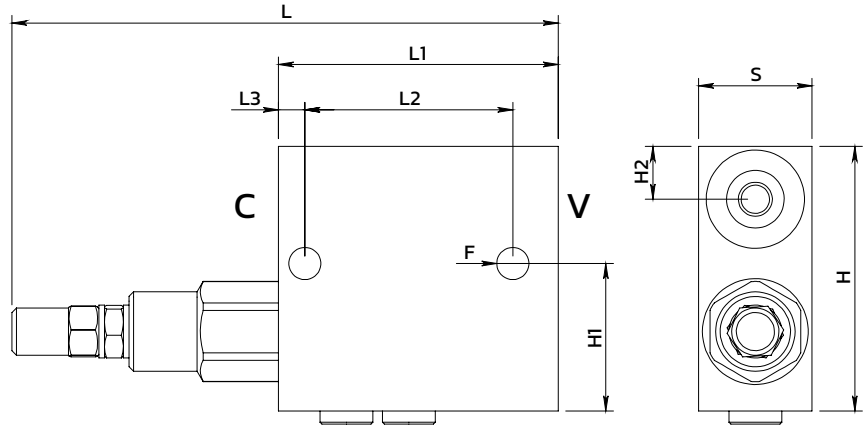
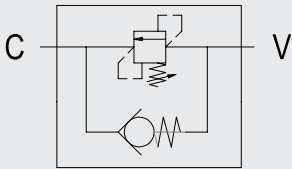
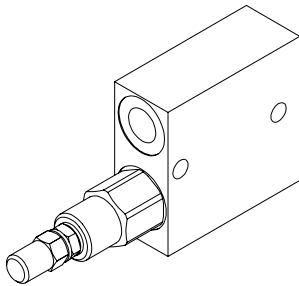


## Direct acting pressure sequence valve Valvola di sequenza ad azione diretta

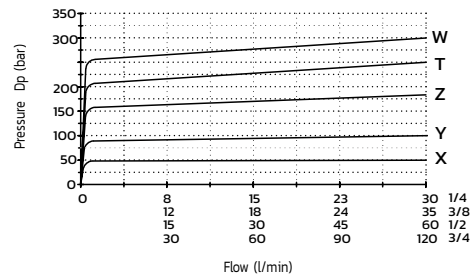


### SPECIFICATIONS / SPECIFICHE

Fluid viscosity / Viscosità Fluido	ISO 3448
Filtration / Classe di contaminazione	ISO 4406
Fluid temperature / Temperatura fluido	-20°C +90°C
Ambient temperature / Temperatura ambiente	-20°C +50°C
Max operating pressure / Pressione di lavoro max	350 bar
Standard seals / Guarnizioni standard	NBR 70 Shore A
Manifold material / Materiale collettore	Zinc plated steel

### PERFORMANCE / PRESTAZIONI

Oil viscosity 24 mm<sup>2</sup>/s (3.5 °E) - Temperature 50°C



### ORDERING CODE / CODICE ORDINAZIONE

**11 A 03 F00 3 R \*\* \***

Ports size	
02	1/4 BSPP
03	3/8 BSPP
04	1/2 BSPP
05	3/4 BSPP

Adjustment	
R	Screw with steel cap (Std)
N	Tamper resistant cap
O	Handknob and locknut

Setting range (bar) - Std setting at 5 l/min (bar)					
1/4		3/8-1/2		3/4	
X	05-50	50	X	10-50	30
Y	30-100	100	Y	20-100	75
Z	50-210 (Std)	200	Z	10-180 (Std)	90
W	100-350	300	T	50-250	130
			W	80-300	150

Standard code	Thread (C-V)	L	L1	L2	L3	H	H1	H2	S	F	Weight kg	Max Flow (l/m)
11A03F003R02Z	1/4	120	60	49	5.5	60	24.5	12	25	6.5	0.7	30
11A03F003R03Z	3/8	146	74	55	7	70	39	14	30	8.5	1.2	35
11A03F003R04Z	1/2	152	80	55	7	70	37	15	30	8.5	1.1	70
11A03F003R05W	3/4	164	100	80	10	100	50	20	40	8.5	2.8	120

\* On request versions: Please, contact our customer service / Versioni su richiesta: Per cortesia contattare il ns. servizio clienti.