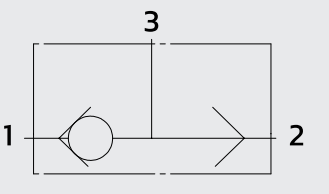
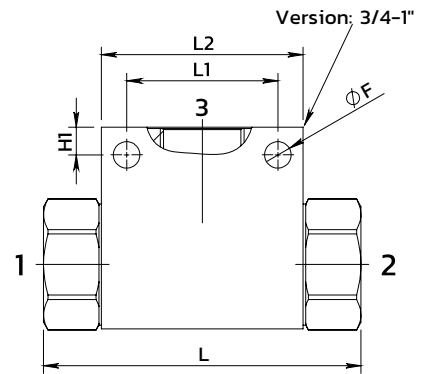
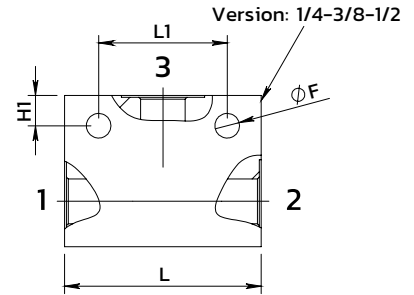
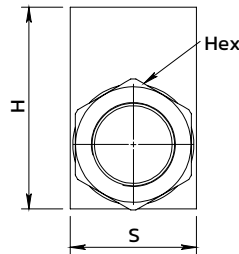
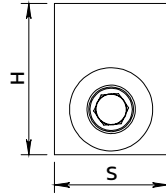
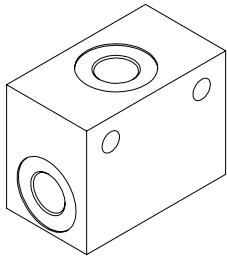


Shuttle valve Valvola selettiva

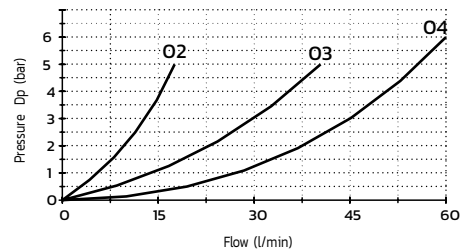


SPECIFICATIONS / SPECIFICHE

Fluid viscosity / Viscosità fluido	ISO 3448
Filtration / Classe di contaminazione	ISO 4406
Fluid temperature / Temperatura fluido	-20°C +90°C
Ambient temperature / Temperatura ambiente	-20°C +50°C
External surfaces / Superfici esterne	Zinc plated/Zincate
External surfaces / Superfici esterne	Zinc plated/Zincate
Max operating pressure / Pressione di lavoro max	350 bar

PERFORMANCE / PRESTAZIONI

Oil viscosity 24 mm²/s (3.5 °E) - Temperature 50°C



ORDERING CODE / CODICE ORDINAZIONE

13 L 01 B01 3 O ** O



Ports size	
02	1/4 BSPP
03	3/8 BSPP
04	1/2 BSPP
05	3/4 BSPP
06	1" BSPP

Standard code	Threads	L	L1	L2	H	H1	S	Hex	ØF	Weight kg	Max Flow (l/m)
13L01B0130020	1/4	52	34	-	40	8	30	-	6.5	0.30	20
13L01B0130030	3/8	60	44	-	40	8	30	-	6.5	0.35	40
13L01B0130040	1/2	70	50	-	60	10	30	-	8.5	0.66	60
13L01B0130050	3/4	127	44	80	58	12	35	41	8.5	1.086	110
13L01B0130060	1"	126	60	80	80	11	50	46	10.5	1.850	180

* On request versions: Please, contact our customer service / Versioni su richiesta: Per cortesia contattare il ns. servizio clienti.