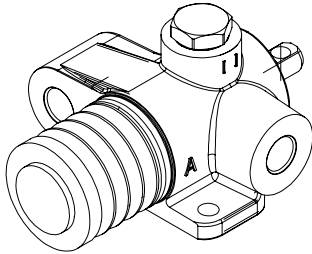
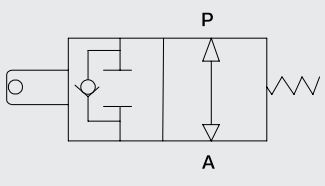
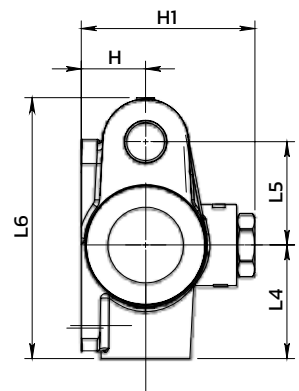
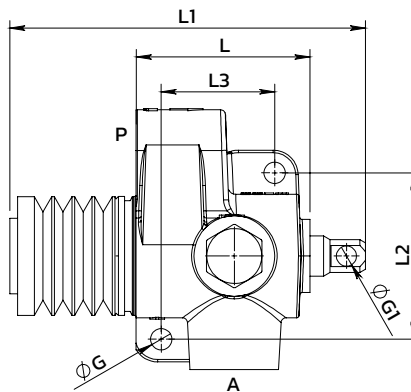


End-stroke valve normally open

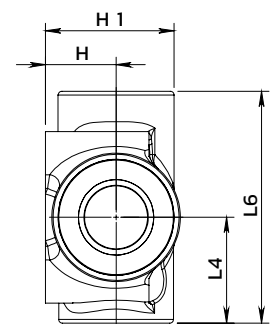
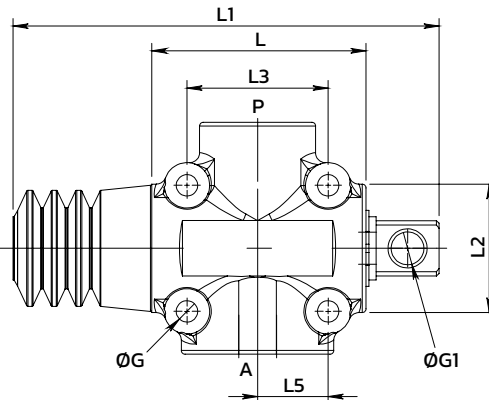
Fincorsa in trazione o spinta normalmente aperto



V-FCR-1T-NA 60/80



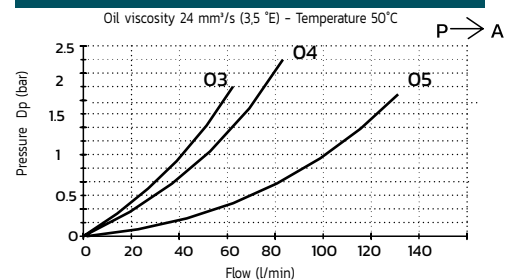
V-FCR-1T-NA-120



SPECIFICATIONS / SPECIFICHE

Fluid viscosity / Viscosità fluido	ISO 3448
Filtration / Classe di contaminazione	ISO 4406
Fluid temperature / Temperatura fluido	-20°C +90°C
Ambient temperature / Temperatura ambiente	-20°C +50°C
External surfaces / Superfici esterne	Cast iron
Standard seals / Guarnizioni standard	NBR 70 Shore A

PERFORMANCE / PRESTAZIONI



ORDERING CODE / CODICE ORDINAZIONE

20 T 01 C01 9 C ** O

Ports size	
O3	3/8 BSPP
O4	1/2 BSPP
O5	3/4 BSPP

Standard code	A-P ports	L	L1	L2	L3	L4	L5	L6	ØG	ØG1	H	H1	Weight (kg)	Max. Flow (l/m)	Max. Pressure (bar)
20T01C019C030	3/8-G	69	130	66	45	45	41	103	8.5	6.5	26	68	1.63	60	350
20T01C019C040	1/2-G	69	130	66	45	45	41	103	8.5	6.5	26	68	1.62	80	350
20T01C019C050	3/4-G	88	173	50	56	46	23.5	92	8.5	13	27.5	50	2.15	120	350

Standard code	Start Closing	Power	Max stroke	Power	xxxx
20T01C019030	7 mm	6.5 Kg	20 mm	18 Kg	V-FCR-1T-NA-60
20T01C019040	7 mm	6.5 Kg	20 mm	18 Kg	V-FCR IT-NA- 80
20T01C019050	9 mm	33 Kg	17 mm	50 Kg	V-FCR IT-NA-120

* On request versions: Please, contact our customer service / Versioni su richiesta: Per cortesia contattare il ns. servizio clienti.