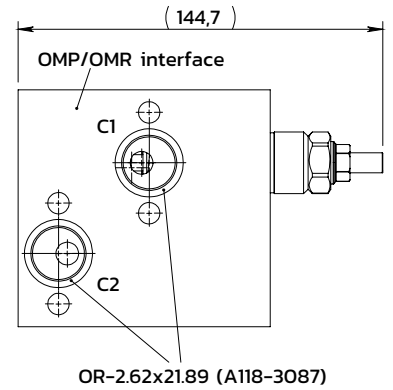
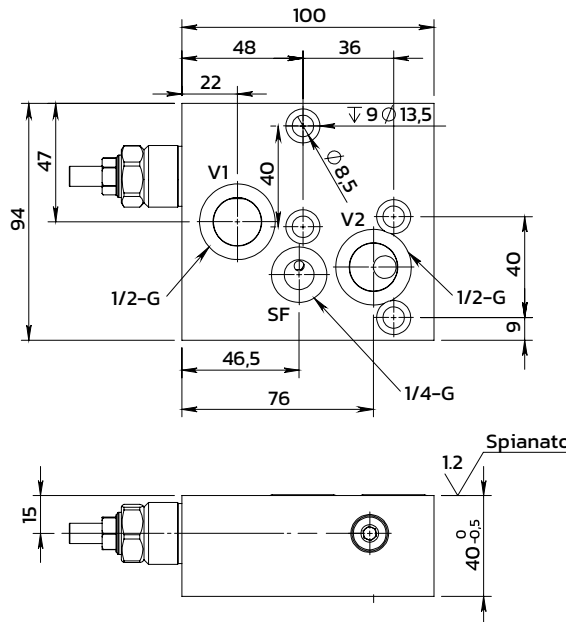
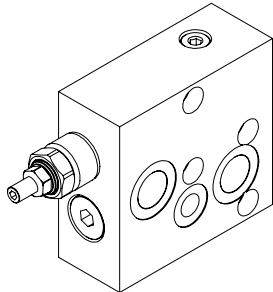
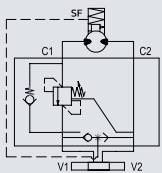


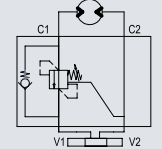
Single effect overcenter valve, OMP/OMR flangeable  
*Valvola overcenter semplice effetto, flangiabile OMP/OMR*



I=With brake release



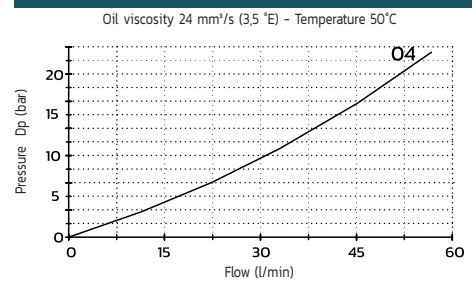
O=without brake release



### SPECIFICATIONS / SPECIFICHE

Fluid viscosity / Viscosità fluido	ISO 3448
Filtration / Classe di contaminazione	ISO 4406
Fluid temperature / Temperatura fluido	-20°C +90°C
Ambient temperature / Temperatura ambiente	-20°C +50°C
Max operating pressure / Pressione di lavoro max	350 bar
Max flow / Portata massima	60/lm
Standard seals / Guarnizioni standard	NBR 70 Shore A
Manifold material / Materiale collettore	Zinc plated steel

### PERFORMANCE V to C / PRESTAZIONI



### ORDERING CODE / CODICE ORDINAZIONE

**15 M A 12 W\*8 3 M 04 \***

Pilot ratio		Manifold model		Adjustment option		Setting range (bar)		Std setting (bar)	P increase bar/turn
A	(Std) 4.25:1	0	Without brake release	M	Socket screw (Std)	X	30-210	200	70
B	8:1	1	With brake release	N	Tamper proof cap	Y	60-350	300	120
C	11:1								

\* On request versions: Please, contact our customer service / Versioni su richiesta: Per cortesia contattare il ns. servizio clienti.