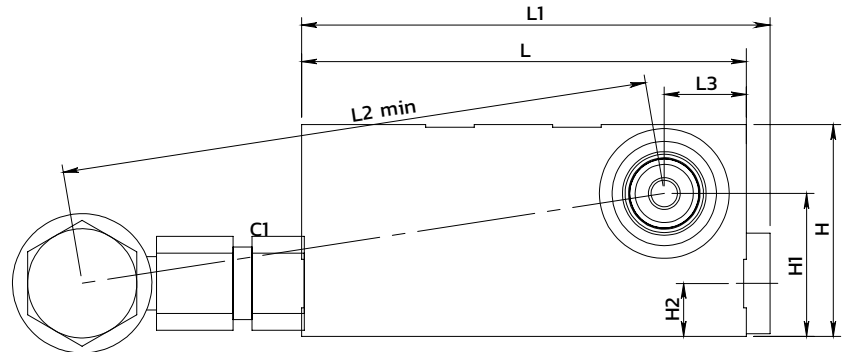
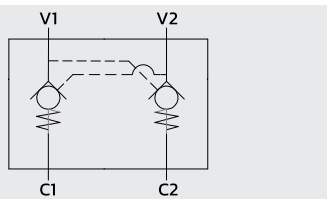
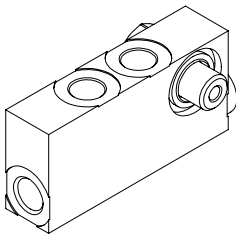
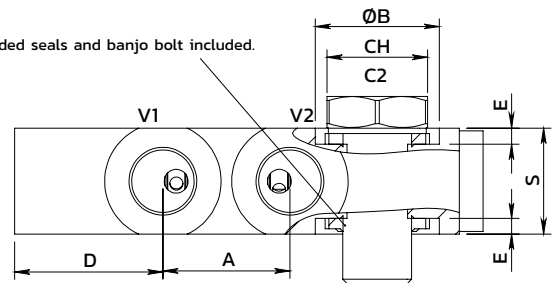


Dual pilot operated check valve with banjo bolt

Valvola di blocco pilotata doppio effetto con bullone raccordo



Internal-external bonded seals and banjo bolt included.

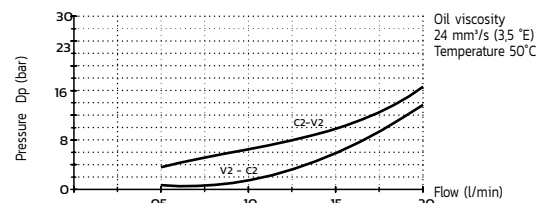


SPECIFICATIONS / SPECIFICHE

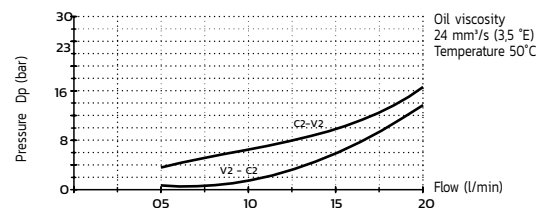
Fluid viscosity / Viscosità fluido	ISO 3448
Filtration / Classe di contaminazione	ISO 4406
Fluid temperature / Temperatura fluido	-20°C +90°C
Ambient temperature / Temperatura ambiente	-20°C +50°C
Max operating pressure / Pressione di lavoro max	300 bar
Standard seals / Guarnizioni standard	NBR 70 Shore A
Manifold material / Materiale collettore	Zinc plated steel

PERFORMANCE / PRESTAZIONI 02-03

PRESSURE DROP VS. FLOW V2>C2 / C2>V2



PRESSURE DROP VS. FLOW V1>C1



ORDERING CODE / CODICE ORDINAZIONE

14	M	02	F01	3	M	**	X
----	---	----	-----	---	---	----	---

OR on pilot piston		Ports size	
M	With OR (Std)	02	1/4 BSPP
N	Without OR	03	3/8 BSPP
		04	1/2 BSPP

Standard code	Thread V1-V2 C1-C2	L	L1	L2 min	L3	A	ØB	D	E	H	H1	H2	S	CH	Cr. Press	Weight kg	Max Flow (l/m)	Pilot ratio
14M02F013M02X	1/4	84	88,5	123	15,5	24	24,5	28	3	40	27	10	20	19	1	0,48	20	4,9 : 1
14M02F013M03X	3/8	86	90,5	127	14	29	27	23	4	45	30,5	12,5	25	22	1	0,68	20	4,9 : 1
14M02F013M04X	1/2	100	104,5	140	17	35,5	32	25	4	55	37	16	32	27	1	0,85	20	4,9 : 1

* On request versions: Please, contact our customer service / Versioni su richiesta: Per cortesia contattare il ns. servizio clienti.